

Ewha International Summer College 2018

“

Why Choose Seoul? Imagine your Korea

Seoul is the business and cultural hub of South Korea, where skyscrapers tower over Buddhist temples. Take it all in from the N Seoul Tower, built atop a peak in Namsan Park. The teahouses and shops of Insadong give you a taste of Korean flavor, which you can further experience with a visit to the grounds and museums of Gyeongbokgung. UNESCO World Heritage Site Changdeokgung Palace is a fine example of authentic ancient architecture. (trip advisor)

”



Quick Facts about Seoul and Korea

- Korea is visited by 10 million international travelers annually
- Population in Seoul: 10,204,057 (2017)
- 12 UNESCO World Heritage Sites in Korea (2017)
- Seoul has 4th largest metropolitan economy in the world
- Seoul is world's most wired city, 1st in technology readiness (Cities of Opportunity)
- Incheon International Airport voted as the world's best airport for 9 years
- The 28th Olympic Winter Games to be held in PyeongChang 2018



Ewha Womans University



“...among Seoul's most beautiful campuses, with its mix of old, Gothic-style buildings and a very modern Ewha Campus Complex (ECC).” (Visitseoul.net)

Founded in 1886, Ewha Womans University is Korea's first pioneering educational institution for women. It has grown to become one of Asia's most prestigious universities, and over 1,300 male and female students from more than 60 countries visit Ewha each year for various programs to experience Ewha's leading global infrastructure and quality education. As a comprehensive research university, Ewha has 14 colleges and 15 graduate schools, and over 500 courses across 73 major departments are taught in English every semester. Ewha is ranked #1 in Leiden for a Korean university (2013-2017) and selected for Advancement of College Education (ACE) project from the Ministry of Education to receive 9 million USD.



International Summer College

Internationally Diverse

Since 1971, Ewha International Summer College brings together an incredibly diverse group of students to experience the best of Korea. Ewha is the place to experience authentic Korean university life with students from 75+ universities and 15+ countries. You can look forward to making life-long international friends while at Ewha.



Friendly Staff and Support

Ewha ISC will help you with academic, personal and social needs to make your 4 weeks at Ewha unforgettable. Prior to your arrival at Ewha, you will be matched with an **Ewha PEACE buddy** who will give you a campus tour, arrange events in small groups and help you take a full advantage of life at Ewha in Korea. *We are here for you!* Even before your arrival in Korea, our dedicated staff will reach out to you and coordinate throughout your stay at Ewha.



Academic Engagement

With class sizes ranging from 5 to 40, you will be immersed in an intimate and interactive learning environment amongst passionate professors and peers. Discover a wide multitude of diverse courses that will challenge your perspectives beyond the classroom.



June 26 - July 24, 4 weeks



| SUN | MON | TUE | WED | THU | FRI | SAT |
|------|------------------------------|---|----------------------------------|-----------------|---------------------------|------|
| 6.24 | 6.25 ✈️ Check-in | 6.26 🌟🌟🌟 Welcoming Ceremony & Orientation | 6.27 🎉 Course Commencement | 6.28 Class → | 6.29 🌟🌟🌟 Field Trip | 6.30 |
| 7.1 | 2 Class → | 3 | 4 | 5 | 6 🌟🌟🌟 Field Trip | 7 |
| 8 | 9 Class → | 10 | 11 | 12 | 13 🌟🌟🌟 Field Trip | 14 |
| 15 | 16 Class → | 17 | 18 | 19 | 20 🌟🌟🌟 Field Trip | 21 |
| 22 | 23 🕒 Last day of Class | 24 Farewell Ceremony | 25 ✈️ Check-out | 26 | 27 | 28 |



Sample Subject Courses

You can find over 40 courses in various academic disciplines. All courses are taught in English by faculty from top universities around the world including Ewha.

Each course carries 3 credits and you may choose 1-3 courses that can be credit-transferred to your home university. After completing the program, we will send an official transcript to help you transfer credits.

Art (studio-type)

Korean Ceramics
Korean Traditional Dance
Korean Traditional Music
Korean Traditional Painting

Business & Economics

Corporate Finance
Financial Management
Global Economic Issues
International Trade
Macroeconomics
Microeconomics
Principles of Accounting Information

Humanities

Advanced Topics in East Asian Religion
Contemporary Korean and Korean American Fiction
Modern Western History through Themes
Philosophy

Korean and East Asian Studies

Gender Relations in Korea
History of Korean Tradition and Folk Culture
Korean Film History
Modern History of Korea
Sex, Gender, Sexuality in Korea
Women's History of Korea

Law, Politics & International Studies

Comparative Politics
International Relations of North Korea with East Asian Countries
Introduction to International Relations
Law and Economic Development

Science & Engineering

Biology I
Biology of Sustainability
C++ Programming
Calculus I
Understanding Organic Chemistry

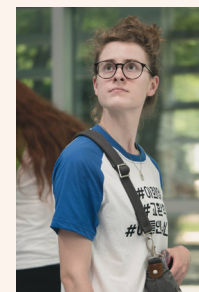
Social Science

Advertising & Society: Controversial Issues in Advertising
Developing Authentic Leadership & Communication Skills
Feminist and Queer Disability Studies
Globalization and Inequality
Intercultural Communication Theories and Practice
Cultural Globalization Between the U.S. and Asia
Social changes, challenges, and future of Asia:
Building better society through global collaboration
Film & Media Studies

Korean Language

Level 1 (Basic)
Level 2 (Intermediate)
Level 3 (Advanced)
Level 4 (Highly Advanced)

Please note the courses listed are sample and are subject to change. For most current information, visit summer.ewha.ac.kr and click on the "Course Info & Field Trip (ISC)" tab.



Friday Field Trips

The Ewha ISC organizes Friday trips to must-visit tourist sites in Seoul to help you experience Korean tradition and culture of contemporary Seoul. After the application is submitted, you can sign-up for the activities below:

Korean Folk Village
Cooking Korean food
Everland
Non-verbal Performance
Demilitarized Zone (DMZ)
Temple Stay



10 Reasons to Choose Ewha ISC



Friendly staff and care from Office of International Affairs



Intimate and interactive learning environment



Ewha has its **own** subway stop



Competitive fees



Courses are taught by **dedicated** professors



Located in vibrant and young town, **Shincheon**



48 years of providing international summer program



PEACE buddy is matched **1:1** to help you adjust life at Ewha and in Korea



International on-campus **dormitory** is guaranteed



99% of the participants **recommend** our program and **would return** for another summer!

Summer Special Program



Does 4-week long Ewha ISC feel too short?
You can join the Summer Special Program to learn Korean and culture!

The SSP is a separate short-term summer program designed to offer language courses as well as thematic lectures on Korean culture to help you get acquainted with Korea.





Schedule

| DAY | AM (09:00 - 12:00) | PM (13:30 - 15:00, 15:30 - 18:30) |
|-----------|--|---|
| Mon - Thu | Korean Language Class Level 1 (Basic) Level 2 (Intermediate) Level 3 (Advanced) | Special Lecture Korean Heritage / Korean Cinema / Korean History / Relations with North Korea / Korean Women and Society / Learn K-pop dance Half-day Field Trip National Museum of Korea / Korean Movie Theater / Traditional Music Performance / Kimchi making & cooking |
| Fri - Sat | Special Cultural Excursion Trip 2 Days & 1 Night at Korean Traditional Folk Village An overnight trip to a traditional folk village takes place on the first weekend of the program, enabling students to experience authentic Korean local culture and life through the following activities: Water rafting / Staying in a traditional Korean-style home / Watching a traditional mask dance / Tasting traditional local cuisine | |

Please note topics in special lectures & field trips are subject to change

August 7 - 21, 2 weeks

| SUN | MON | TUE | WED | THU | FRI | SAT |
|-----|---------------|---------------------------------------|---|-----|--|-----|
| | | | 1 | 2 | 3 | 4 |
| | | | | |  | |
| 5 | 6 Check-in | 7 Welcoming Ceremony & Orientation | 8 Course Commencement | 9 | 10 Special Cultural Excursion Trip | 11 |
| 12 | 13 | 14 | 15 NO school National Holiday | 16 | 17 | 18 |
| 19 | 20 | 21 | 22 Farewell Ceremony | 23 | 24 | 25 |
| | | |  | | | |
| 26 | 27 | 28 | 29 | 30 | 31 | |

On-campus Housing

The International House (I-House) is available for all registered ISC and SSP students. Located in the heart of Ewha campus, the I-House is only a few minutes away within walking distance to all classes. The I-House has its own gym that is open for 24 hours, a co-op store, computer labs, lounges, kitchenettes, laundry facilities and more. Rooms are conditioned by central heating and air conditioning.

On your check-in day, you will be provided with two bed sheets, a pillow and a pillowcase. Rooms in the I-House are fully furnished with a bed, a desk, a desk lamp, a closet, a bookshelf, and a refrigerator and are equipped with wifi internet connections. Although it does not include any meal plans, you can easily find 9 different cafeterias on campus alone and diverse international cuisines off campus all within 5-minute walk from the front gate of the university. Students pay for housing fee after they arrive at Ewha.

| | Check-in Date | Check-out Date | Double Room* | Single Room* |
|------------------------------|---------------|----------------|--------------|--------------|
| International Summer College | June 25 | July 25 | 640,000 KRW | 880,000 KRW |
| Summer Special Program | August 6 | August 22 | 480,000 KRW | 650,000 KRW |

* Housing fee is based on summer 2017 and is subject to change

Double Room



Single Room A Type (bathroom in the room)



Single Room B Type (bathroom on the floor)



Other Facilities

Lounge



- Open 24 hours
- Watch cable TV and socialize!

Kitchen

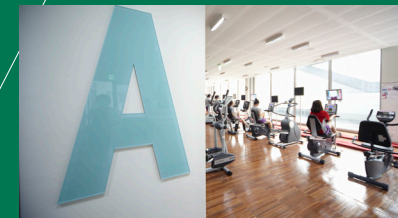
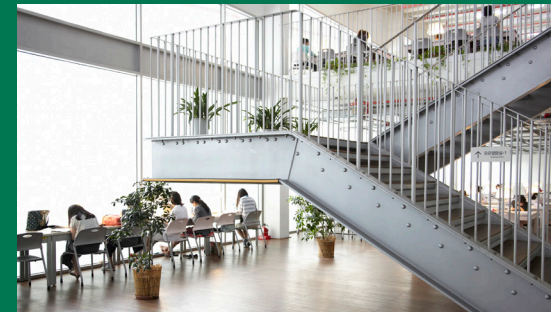


Located on each floor, equipped with microwave, toaster, electronic pot and water fountain

Laundromat



- Laundry machines, dryers and iron available
- Pay less than 1 USD / time



Admission

Application Deadlines

| | International Summer College | Summer Special Program |
|------------|------------------------------|------------------------|
| Early Bird | March 30* | May 25** |
| Regular | May 11 | June 29 |

*receive 20% discount on tuition by applying and completing payment.

**receive 10% discount on tuition by applying and completing payment.

Eligibility

- Submission of completed online application AND
- Any undergraduate or graduate students currently enrolled in university OR
- Prospective students entering university in September 2018 OR
- Students who graduated from university in 2018

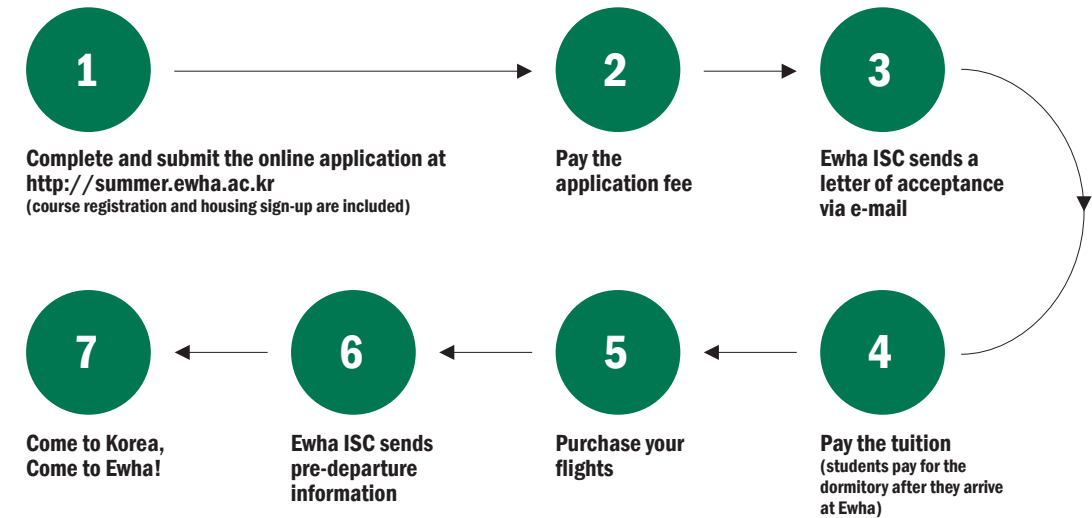
Required Materials

For the online application, you will need to upload the following documents:

- face picture (3 cm X 4 cm) in jpg file format
- scanned copy of college or university enrollment or transcript
- scanned copy of passport bio-page
- scanned copy of overseas traveler's insurance*

*If a copy of insurance policy or purchase receipt is not available at the time of submission, it can be e-mailed to gosummer@ewha.ac.kr after the admission.

Application Procedure



Fees

| | International Summer College | Summer Special Program |
|-----------------------|--|--|
| Application Fee (KRW) | 100,000 | 100,000 |
| Tuition (KRW) | 3,600,000 (3 courses) >> 2,880,000* 3,000,000 (2 courses) >> 2,400,000* 1,800,000 (1 course) >> 1,440,000* | 1,800,000 >> 1,620,000** |

Ewha International Summer College

Office of International Affairs

B334 ECC, Ewha Womans University

52 Ewhayeodae-gil, Seodaemun-gu,
Seoul 03760, South Korea

Tel. 82-2-3277-3160

Fax. 82-2-364-8019

Website. summer.ewha.ac.kr

E-mail. gsummer@ewha.ac.kr

Facebook. [ewhasummer](https://www.facebook.com/ewhasummer)

Instagram. [ewhasummer](https://www.instagram.com/ewhasummer)



EWHA WOMANS UNIVERSITY